



Senior Parent Night

Multi-Purpose Room
September 10, 2018 • 6:00 p.m.

Local college representatives will be available after the presentation

Clovis Unified Graduation Requirements

Credits: 230

English: 8 semesters

Math: 4 semesters

Including Math 1/Algebra 1 & Math 2/Geometry

Science: 4 semesters

Including Physical (2) & Biological (2)

Social Science: 7 semesters

PE: 8 semesters

Health: 1 semester

Academic Breadth: 4 semesters

Including Fine Art/Foreign Lang/CTE



SAT/ACT

SAT

www.collegeboard.org

October 6th

Registration deadline 9/7
with late fee 9/26

November 3rd

Registration deadline 10/5

December 1st

Registration deadline 11/2



ACT

www.actstudent.org

October 27th

Registration deadline 9/28
with late fee 10/14

December 8th

Registration deadline 11/18

SAT/ACT Online Prep (Free)

The Khan Academy and College Board have partnered up to provide students with the resources necessary to prepare for the SAT:

www.khanacademy.org/sat



Check out the ACT website for a variety of on-line tools to help students prepare for the ACT:

www.actstudent.org

Senior Conferences



Senior Conferences with Counselors
begin **September 13, 2018** through
Government/Economics classes

Scholarships



► Check Counseling Center website and office for the **Bear Scholarship Bulletin**, which is updated monthly.

► **BHS Scholarship Portfolio** deadline is **January 18, 2019**

► **Scholarship search engines:** Include icanaffordcollege.com, fastweb.com, CollegeBoard.com/pay, mappingyourfuture.org, and collegenet.com

Financial Aid



- **FAFSA** www.fafsa.ed.gov
available October 1, 2018
- **FAFSA Workshop** at BHS on
November 15, 2018 at 6:00
p.m. in the Library
- **CAL Grant** deadline March 2, 2019
- **Cal Grant GPA** will be submitted
by CUSD.



What's New

Early FAFSA Launch – 3rd year

- 2019–2020 FAFSA available starting on October 1, 2018 at fafsa.gov
- Change to October 1st launch is permanent

Prior-Prior Year income information now required

- 2017 tax & income information required
- IRS Data Retrieval Tool (DRT) available upon launch of FAFSA (October 1st)

Reasons for the Changes

Alignment

- Admissions application deadlines occur in the fall
- FAFSA completed at same time = less confusion

Certainty

- No need to estimate tax info
- IRS Data Retrieval Tool available immediately
- Earlier receipt of Expected Family Contribution

Less Pressure

- More time before (most) state and school deadlines
- More time to compare schools before College Signing Day

FAQ About Timing & Reporting

Can a student choose to report 2018 income information?

- No – They must report info for the year that is required by the FAFSA
- Remember – Certain items on FAFSA are “as of today,” so students must read each question and fill out accordingly

(ex: marital status and asset info)

Common FAFSA Mistakes

- Listing only one college to receive FAFSA data
- Not reporting parental information
- Not using the IRS Data Retrieval Tool
- Income Tax vs. Taxes Withheld on W-2
- Not providing net worth of assets as of the date the FAFSA is completed
- Including assets that should be excluded (value of primary residence, retirement plans)
- Not signing the FAFSA

MIDDLE CLASS SCHOLARSHIP

ENROLLMENT REQUIREMENTS

- MUST BE ENROLLED AT A UC OR CSU
- MUST BE ENROLLED AT LEAST ½ TIME
- 1ST UNDERGRADUATE PROGRAM
- INCOME LESS THAN \$171,000
- ASSETS LESS THAN \$171,000

UC Maximum award amount: \$5,052

CSU Maximum award amount: \$2,298

ONLY FOR STUDENTS WHO HAVE LESS THAN 40% OF THEIR UC OR CSU FEES COVERED BY GRANTS AND SCHOLARSHIPS



Student Aid Commission



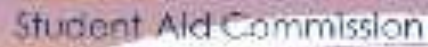
**Cal
Grant**
Consideration

Making education beyond high school financially accessible to all Californians.



I completed and
successfully
submitted my FAFSA
and my high school
uploaded my GPA.





WEBGRANTS4STUDENTS.ORG

[illegible]

Making education beyond high school financially accessible to all Californians.

FSA ID

- The FSA ID is a *username* and *password* used by students, parents, and borrowers
 - login to U.S. Department of Education websites
 - electronically sign documents
- **Multiple uses**
 - To apply for federal student aid at fafsa.gov
 - To receive a federal student loan
 - To perform important activities as a federal student loan borrower, such as choosing a repayment plan or applying for a deferment

Financial Aid Resources

- **U.S. Department of Education**
<http://www.studentaid.ed.gov/>
- **Funding Your Education and The Student Guide**
<https://studentaid.ed.gov/sa/resources>
- **California State Aid Commission** – www.csac.ca.gov
- **Financial Aid Information** – www.fastweb.com
- **Edfund** – www.edfund.com
- **Fund Your Future** – www.fundyourfuture.org



The BHS Profile

- In 2018 **90%** of our students indicated that they were planning on attending a 2 year or 4 year institution.
- **47%** of those students completed the FAFSA
- **43%** of our students possibly missed out on some form of money to help them attend one of these institutions along with students who might have attended specialized schools as well.

No FAFSA = No Money!

- **No FAFSA means that the student is not eligible for:**
 - Middle Class Scholarship
 - Work Study (getting a job on campus)
 - Academic Scholarships (i.e. Colleges that give GPA or SAT/ACT monies- usually out of state or private schools, etc)
 - Athletic Scholarships for any amount
 - No student loans
 - Central Valley Promise (Free 1st semester of CC and Fresno State).
- Not only does this include 2-year and 4-year institutions, but it also includes trade schools and specialized program schools as well.
- Do you really know that you will not receive any monetary assistance from a school by the March 2 deadline for FAFSA?
If you are not sure, the FAFSA should be completed!



College Admissions

California Independent Colleges

University of California

California State Universities

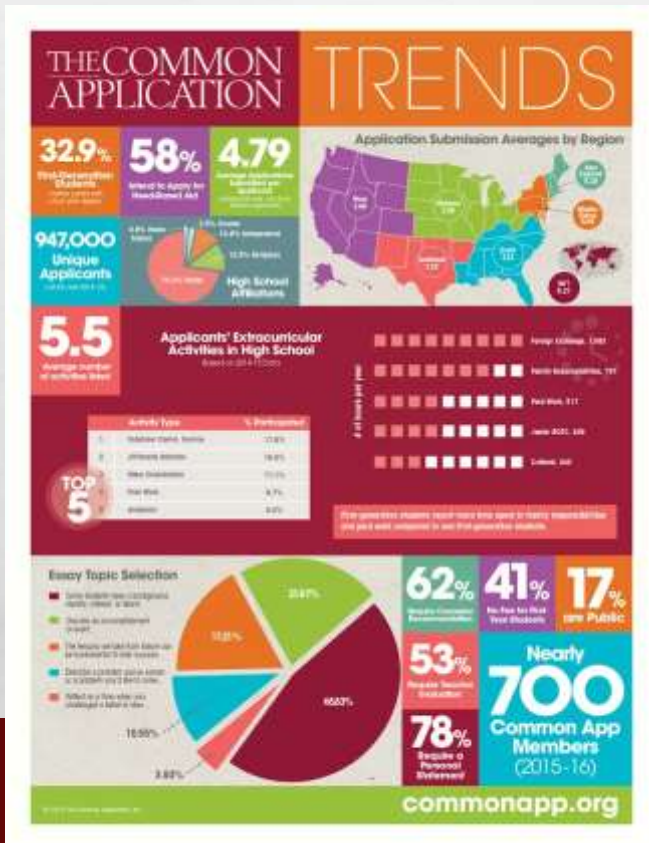
Community Colleges



California Independent Colleges

<https://secure.californiacolleges.edu/home/AICCU.aspx>

- Common Application
- Send EDU
- SAT, ACT, SAT Subject Test
(optional: check college website)





UC Applications

<http://admission.universityofcalifornia.edu/>

SAT WITH ESSAY

- Subject Tests in 2 different areas
(*recommended for competitive majors*)
- Math Level II only

ACT

- ACT with writing

- Applications accepted between November 1-30 (application opened August 1)
- Application Fee: **\$70** per campus
- UC Application/Personal Insight Question Workshop TBD and will be in **the Career Center** – presented by a representative from UC Davis (*sign up in the Career Center*)

Personal Insight Questions



- The Personal Insight Questions are a component of the UC application. Must complete 4 of 8 questions.

GPA for incoming UC students

(BHS Class of 2017)

School	City	County	Fall Term	Campus	App GPA	Adm GPA	Enrl GPA
FLOYD B BUCHANAN HIGH SCHOOL	Clovis	Fresno	2017	Universitywide	3.89	4.06	4.09
				Berkeley	4.01	4.21	4.14
				Davis	3.93	4.21	4.14
				Irvine	3.95	4.21	4.16
				Los Angeles	3.98	4.28	4.26
				Merced	3.65	3.75	
				Riverside	3.72	3.76	
				San Diego	4.03	4.27	
				Santa Barbara	3.94	4.11	4.00
				Santa Cruz	3.77	4.09	
			2016	Universitywide	3.86	3.97	4.01

UC Enrollment

(BHS Class of 2017)

School	City	County/State/ Territory	Campus	Fall Term		All
FLOYD B BUCHANAN HIGH SCHOOL	Clovis	Fresno	Universitywide	2017	app	106
					adm	69
					enr	46
				2016	app	113
					adm	86
					enr	56

UC Enrollment by High School

(BHS Class of 2017)

Fall 2017 Freshmen by Year (UC System)		
School	City	Enrolled
Buchanan High School	Clovis	46
Clovis East	Clovis	27
Clovis High School	Clovis	14
Clovis North	Clovis	24
Clovis West	Clovis	27

ELC: Eligibility in the Local Context

- Top 9% of BHS students (based on GPA)
- Must have completed 11 approved courses by beginning of senior year
- Must apply to a UC school in November
- If not admitted to a campus they applied to will be offered admission to another campus if space is available

California State University

www2.calstate.edu/apply

CSU Admission Requirements

- 4 years of English
- 3 years of Math
- 2 years of Social Science
- 2 years of Lab Science
- 2 years Foreign Lang.
- 1 year visual/performing arts
- 1 year of a College Prep Elective
- SAT or ACT: Score based on Eligibility Index

Eligibility Index: Each CSU campus has their own Index needed for admission. For Fresno State the minimum local Index is 3100

To calculate the Eligibility Index:

CSU GPA x 800 + SAT Math + SAT English
CSU GPA x 200 + ACT –Writing Score x 10



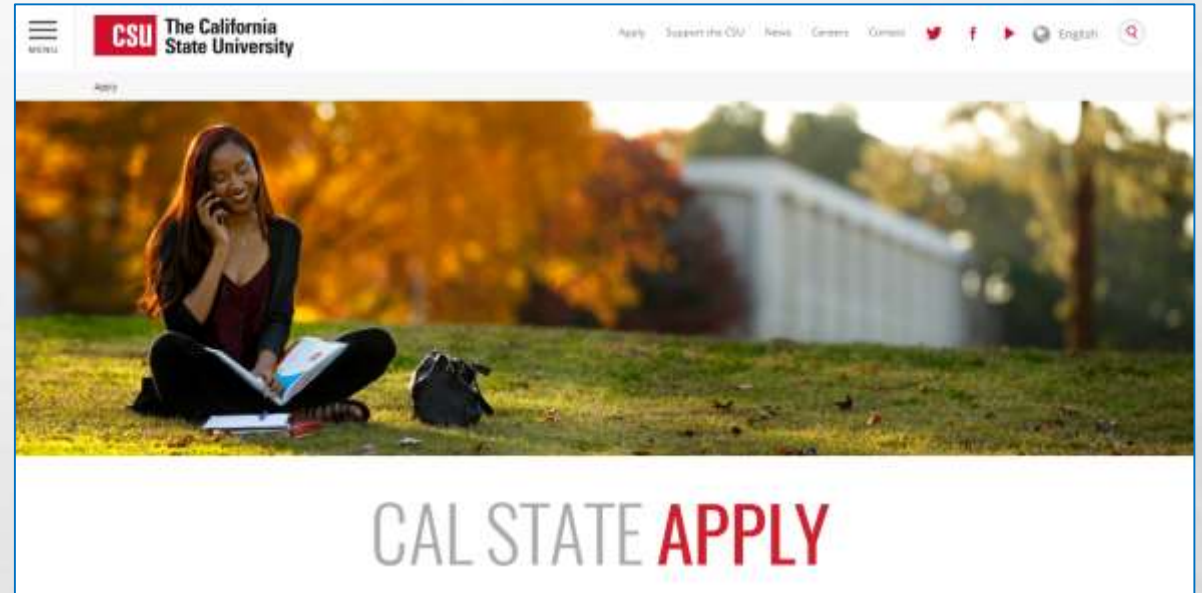
ADMISSION SUMMARY/CAMPUS IMPACT INFORMATION*

Fall 2017 First Time Freshman Applicant								
CSU CAMPUS (ENROLLMENT DATA AS OF)	APPLIED	ADMITTED	ENROLLED	AVERAGE GPA	AVERAGE SAT	AVERAGE ACT	IMPACTION (2016-2019)	IMPACTION INFORMATION
Bakersfield Fall 2017 Data	6,893	5,334	1,467	3.2	912	19	Admit Using CSU Eligibility	Impacted Major: Nursing (http://www.csusb.edu/nyung/)
Channel Islands Fall 2017 Data	10,882	8,933	1,950	3.21	926	20	Admit Using CSU Eligibility	Not impacted - accepts all eligible applicants.
Chico Fall 2017 Data	23,384	15,797	2,801	3.45	1002	22	Campus Impaction	Impacted majors: Nursing, Broadcasting Arts, Social Work (Fall 18) http://www.csuchico.edu/admission/apply/first-time-freshman/admission-requirements.shtml
Domestic Hills Fall 2017 Data	17,282	9,283	1,711	3.13	958	19	Admit Using CSU Eligibility	Not impacted - accepts all eligible applicants.
East Bay Fall 2017 Data	16,140	11,556	1,400	3.22	1002	19	Campus Impaction	Local Area Index: Meet minimum CSU eligibility Non-Local Area Index: Applicants ranked by Eligibility Index http://www.csueastbay.edu/impactinfo/how-to-apply/east-bay-enrollment-plan-fall-2018.html
Fresno Fall 2017 Data	17,603	10,496	3,431	3.33	990	20	Impacted in All Majors	Local Area Index: SAT: 3100 Non-Local Area Index: SAT: 3900 (Fall 2017), for program impaction indexes: http://www.csufresno.edu/admission/impact/index.html
Fulton Estimated Fall 2017 Data	45,803	21,040	4,456	3.58	1022	22	Impacted in All Majors	Local Area Index: SAT: 3600, ACT: 696 Non-Local Area Index: SAT: 3800, ACT: 814 Nursing: SAT: 4600, ACT: 1094 http://admission.fulton.edu/impactwebdata/fulton/eligibility/index.shtml
Humboldt Fall 2017 Data	11,453	9,313	1,213	3.14	1085	26	Campus Impaction	Non-Local Area Index: SAT: 3000, ACT: 713 http://admission.humboldt.edu/apply/impact/
Long Beach Fall 2017 Data	63,033	17,667	4,100	3.5	1130	23	Impacted in All Majors	Local and Non-Local Area Index: Minimum Eligibility Index: SAT: 3200 Minimum Eligibility STEM/Nursing Index: SAT: 3300 Pool-driven competitive admission by major; local area students who meet minimum eligibility requirements but not admissible to the major offered admission as "undecided" http://web.csulb.edu/apply/first-time-freshman/first-time-freshman/
Los Angeles Fall 2017 Data	37,384	17,624	3,740	3.16	941 (941) 1000 (New)	19.3	Campus Impaction	Non-Local Area Index: SAT: 3850. No link available.
Maritime Academy Fall 2017 Data	1,558	746	225	3.41	1156	24	Admit Using CSU Eligibility	http://www.csun.edu/apply/apply.aspx?campus=impactinfo
Monterey Bay Estimated Fall 2017	13,113	7,953	916	3.53	1100	23	Campus Impaction	Non-Local Area Index: SAT: 3600, ACT: 847 http://www.csu Monterey Bay.edu/admission/impactinfo
Northridge Fall 2017 Data	30,196	17,392	5,250	3.43	1018	19.1	Campus Impaction	Local Area Index: SAT: 2950 Non-Local Area Index: SAT: 2700 http://www.csun.edu/admission/apply/first-time-freshman/impactinfo.html
Pomona Fall 2016 Data	32,930	18,396	4,102	3.45	940	23	Campus Impaction	http://www.csu.edu/~admission/apply/apply.aspx?campus=impactinfo
Sacramento Fall 2017 Data	23,936	16,314	3,814	3.41	1067 (New)	21	Campus Impaction	Non-Local Area Index: SAT: 3100, ACT: 770 http://www.csus.edu/admission/impactinfo.html
San Bernardino Estimated Fall 2017 Data	15,737	9,468	2,226	3.3	927	19	Campus Impaction	http://www.csusb.edu/admission/impactinfo.html
San Diego Estimated Fall 2017 Data	60,595	21,315	5,405	3.88	1229	27	Impacted in All Majors	http://www.csu.sdsu.edu/apply/apply/impactinfo.html
San Francisco Fall 2017 Data	34,523	24,375	4,337	3.09	975	18	Admit Using CSU Eligibility	http://www.csu.sfsu.edu/admission/impactinfo.html
San José Fall 2017 Data	32,097	21,201	4,544	3.3	1119	22	Impacted in All Majors	San José State gives preference in the competitive admission process to "local" applicants. Local = Santa Clara County. For Engineering, the ESI was modified so that the quantitative/tracks section of the SAT was given greater weight. Link to more information: http://www.sjsu.edu/admission/impactinfo/index.html
San Luis Obispo Fall 2017 Data	48,580	16,817	5,194	4.04	1391	30	Impacted in All Majors	No link available.
San Marcos Fall 2017 Data	16,590	9,772	2,565	3.3	1030	22	Campus Impaction	Non-Local Area Index: SAT: 3400, ACT: 805 http://www.csu.sanmarcos.edu/apply/first-time-freshman/impactinfo.html
Sevens Fall 2017 Data	15,711	12,888	1,806	3.2	1020	22	Campus Impaction	http://admission.sevens.edu/how-apply/impacted-majors/first-time-freshman/impacted-majors.shtml
Stanislaus Fall 16 and 17 Data	8,598	5,765	1,403	3.3	997	20	Admit Using CSU Eligibility	Non-impacted. Eligibility Index: SAT: 2950 *SAT/ACT and GPA Averages are from 2016

*Admission summary is for fall 2016 and/or 2017 applicants and will change from year to year.
CSU admission minimum eligibility index: CA Residents: SAT: 2950, ACT: 694, Non-Resident: SAT: 3570, ACT: 842

California State Universities

- Apply online at www2.calstate.edu/apply
- Application filing period for Fall: October 1 to November 30
(complete as soon as possible!)
- Deadlines for CSU campuses vary.
- Application Fee **\$55**
- CSU Application Workshop 11/7 & 11/8 in the Career Center



CSU DATA FOR BHS STUDENTS

Campus	Enrolled
Fresno	416
San Luis Obispo	39
San Francisco	23
Sacramento	17
San Diego	15
Long Beach	14
Northridge	14
Fullerton	13
Monterey Bay	12
San Jose	10
Pomona	6
Channel Islands	5
Chico	4
Sonoma	3
Bakersfield	3
Stanislaus	2
Los Angeles	2
Humboldt	2
San Marcos	1
Maritime Academy	1

Top 10 Majors	# Enrolled
Pre-Nursing	64
Business Administration	55
Biology	55
Undeclared	36
Liberal Studies	30
Psychology	28
Mechanical Engineering	23
Kinesiology	21
Civil Engineering	16
Chemistry	13

EAP Scores and Senior Year

Revised Spring 2018



Bulldog English Readiness

CATEGORY 1

**Fulfilled CSU GE
(ESP Not Needed)**

- Pass AP Composition/ Language Exam with 3 or higher
- Pass AP Composition/ Literature Exam with a 3 or higher
- Pass approved community college English course with C- or better

CATEGORY 2

**Ready for
CSU GE Placement
(ESP Not Needed)**

- Score "Standard Exceeded" on EAP/ CAASP/ SBAC
- Score "Standard Met" on EAP/ CAASP/ SBAC **AND** pass Senior Year-Long English Experience Course with C or better
- **SAT: 550+ / ACT: 22+**
- Weighted HS GPA: 3.3+
- Weighted HS GPA: 3.0-3.29 **AND** Senior Year-Long English Experience Course with C or better

CATEGORY 3

**Ready for Supported
CSU GE Course Enrollment
(ESP Recommended Not Required)**

- **SAT: 510-540 / ACT: 19-21**
- Weighted HS GPA: 3.0-3.29 **AND** 4 years of English

CATEGORY 4

**Ready for ESP and Supported
CSU GE Course Enrollment
(ESP Required)**

- Score "Not Yet Ready" or "Not Ready" on EAP/ CAASP/ SBAC
- **SAT: below 510 / ACT: below 19**

ESP: Early Start Program

AP: Advanced Placement

EAP: Early Assessment Program

CSU GE: California State University General Education

HS: High School

Approved Senior Year-Long English Experience Course: ERWC, Honors English, AP Lang/ Comp, AP Lit/ Comp

ESP/ CAASP/ SBAC: Test taken in 11th grade

Bulldog Math Readiness STEM MAJORS

CATEGORY 1

CATEGORY 2

CATEGORY 3

CATEGORY 4

Fulfilled CSU GE
(ESP Not Needed)

Ready for
CSU STEM GE Enrollment
(ESP Not Needed)

Ready for Supported
CSU STEM GE
Course Enrollment
(ESP Recommended, Not Required)

Ready for ESP and Supported
CSU STEM GE
Course Enrollment
(ESP Required)

- ☐ Pass AP Calculus exam with a 3 or higher
- ☐ Pass AP Statistics exam with a 3 or higher
- ☐ Pass approved community Math college course with C- or better
- ☐ *Pass IB Exam with 4 or higher
- ☐ *CLEP

- ☐ Score "Standard Exceeded" on EAP/ CAASP/ SBAC
- ☐ Score "Standard Met" on EAP/ CAASP/ SBAC **AND** Senior Year-Long Experience Course with C or better
- ☐ SAT: 570+ /SAT Subject Math: 550+ / ACT: 23+
- ☐ SAT: 520-560 /ACT:20-22 **AND** Senior Year-Long Math Experience Course with C or better
- ☐ Weighted HS GPA: 3.7+
- ☐ Weighted HS Math GPA: 3.5+ **AND** Senior Year-Long Math Experience Course with C or better
- ☐ Weighted HS Math GPA: 3.5+ **AND** 5+ years of Math

- ☐ Weighted Math GPA: 3.5+

- ☐ Score "Not Yet Ready" or "Not Ready" on EAP/ CAASP/ SBAC
- ☐ Weighted HS GPA: below 3.5
- ☐ Weighted Math GPA: below 3.5

ESP: Early Start Program EAP/ CAASP/ SBAC: Test taken in 11th grade HS: High School CSU GE: California State University General Education
 Approved Senior Year-Long Math Experience Course: higher than Algebra II AR: Advanced Placement STEM: Science, Technology, Engineering, Mathematics
 CLEP: College Level Examination Program IB: International Baccalaureate *Will not fulfill CSU GE at Fresno State

Bulldog Math Readiness NON-STEM MAJORS

CATEGORY 1

CATEGORY 2

CATEGORY 3

CATEGORY 4

Fulfilled CSU GE
B4 Area
(ESP Not Needed)

Ready for
CSU GE Enrollment
(ESP Not Needed)

Ready for Supported
CSU GE Course Enrollment
(ESP Recommended Not Required)

Ready for ESP and Supported
CSU GE Course Enrollment
(ESP Required)

- ☐ Pass AP Calculus exam with a 3 or higher
- ☐ Pass AP Statistics exam with a 3 or higher
- ☐ Pass approved community Math college course with C- or better
- ☐ *Pass IB Exam with 4 or higher
- ☐ *CLEP

- ☐ Score "Standard Exceeded" on EAP/ CAASP/ SBAC
- ☐ Score "Standard Met" on EAP **AND** pass Senior Year-Long Experience Course with C or better
- ☐ SAT: 570+ /SAT Subject Math: 550+ / ACT: 23+
- ☐ SAT: 520-560 /ACT:20-22 **AND** Senior Year-Long Math Experience Course with C or better
- ☐ Weighted HS GPA: 3.7
- ☐ Weighted HS GPA: 3.5-3.69 **AND** Senior Year-Long Math Experience Course with C or better
- ☐ Weighted HS Math GPA: 3.0+ **AND** Senior Year-Long Math Experience Course with C or better
- ☐ Weighted HS Math GPA: 3.0+ **AND** 5+ years of Math

- ☐ Weighted HS GPA: 3.0+
- ☐ Weighted HS Math GPA: 3.5+

- ☐ Score "Not Yet Ready" or "Not Ready" on EAP/ CAASP/ SBAC
- ☐ Weighted HS GPA: below 3.5
- ☐ Weighted HS Math GPA: below 3.5

ESP: Early Start Program EAP/ CAASP/ SBAC: Test taken in 11th grade CSU GE: California State University General Education
 Approved Senior Year-Long Math Experience Course: higher than Algebra II STEM: Science, Technology, Engineering, Mathematics
 CLEP: College Level Examination Program IB: International Baccalaureate HS: High School *Will not fulfill CSU GE at Fresno State

Smittcamp Honors College + more

- **Full Scholarship to attend Fresno State**
- **Eligibility Criteria**
 - Minimum 3.8 high school GPA
 - Ranking in the top 10% of your high school graduating class
 - Combined SAT score of 1200 or ACT average score of 27
- **3 Mandatory Applications to apply for Smittcamp Family Honors College- President's Honors Scholarship**
 - California State University Undergraduate Admission Application
 - Fresno State Scholarships Application
 - Smittcamp Family Honors College- President's Honors Scholarship
- **Other full or partial scholarships offered through**
 - Lyles College of Engineering
 - Craig School of Business
 - ROTC- Army or Air Force (Tuition or Room/Board)

Private Colleges

Check in with the Career Center for scheduled visits from representatives of Private Colleges. A list is also updated regularly on the Counseling Center Website.

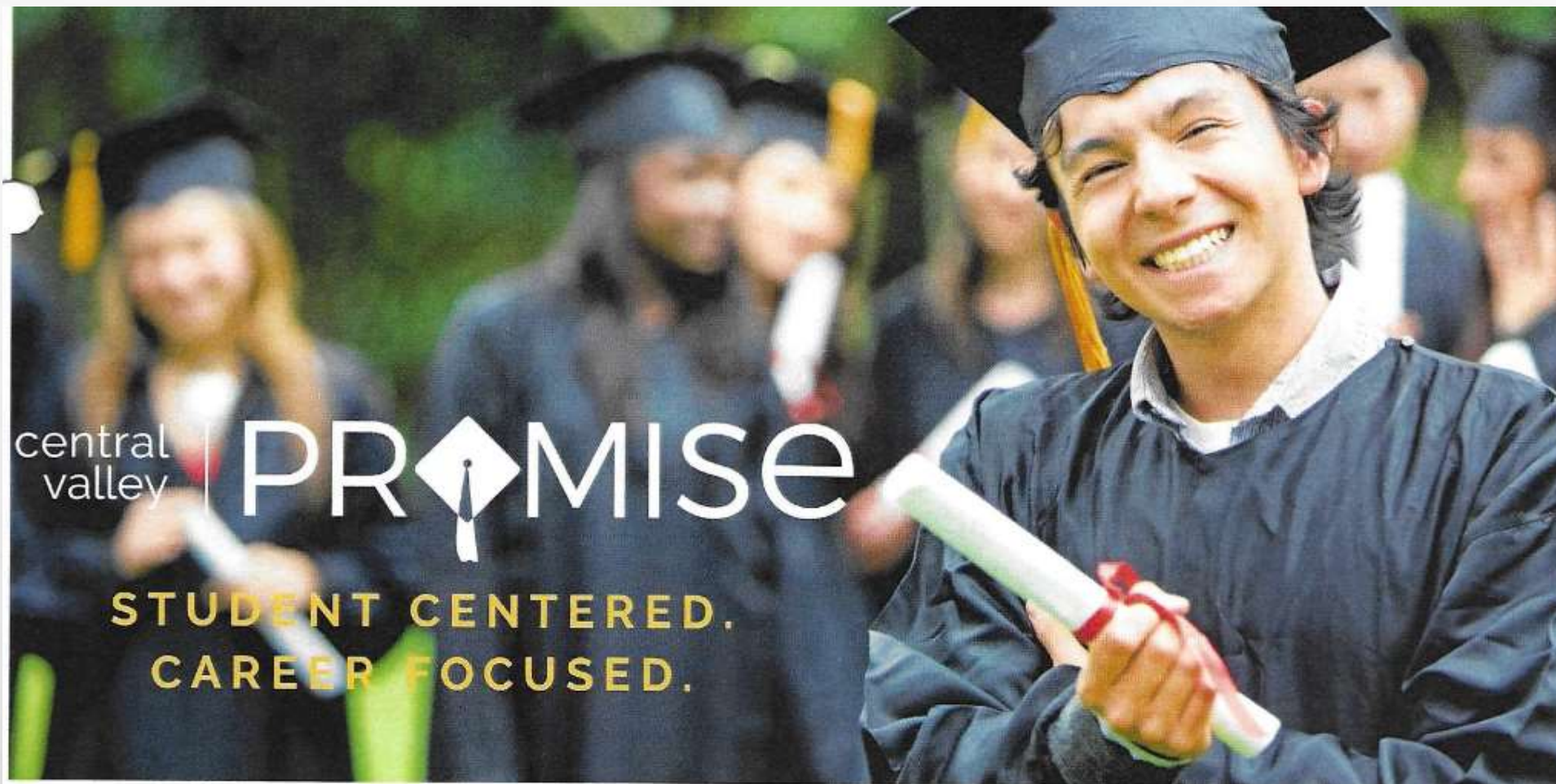


Fresno Pacific University (FPU): An FPU representative comes into the Career Center on a regular basis – check in with the Career Center for an updated schedule and to sign up. The FPU Online Application Workshop will be offered on **November 6** in the Career Center

Community Colleges



- **Clovis Community College Representative:**
Available weekly (*Sign up in Career Center*)
- **Clovis Community College Application Workshop:**
During Senior Conferences
- **Online Orientation and Advising:** 1/29/19 and 1/30
- **Registration-To-Go:** 3/26 for CVP & 4/30-5/2 for all others



central
valley

PROMISE

STUDENT CENTERED.
CAREER FOCUSED.

Leon S. Peters Honors Program

Fresno City College

- GPA of 3.5 or ranking within top 25% of graduating class or score of 1200 on SAT or 24 on ACT AND English 1a Eligible.
- **Deadline:** December 1, 2018

Clovis Community College

- GPA of 3.5 or ranking within top 25% of graduating class and English 1a eligible.
- **Deadline:** February 1, 2019 (*Tip: Don't wait until then*)

Clovis Community College

(BHS Class of 2018)



481 students submitted applications

255 students registered for Fall 2018

We would like for all Class of 2019 students to apply for Fall 2019

College Application Workshops

Students will sign up through Gov/Econ classes for:

University of California (UC)

California State University (CSU)

Fresno Pacific University (FPU)

Fresno City College/Clovis Community College (FCC/CCC)

If a student misses a workshop, he/she can go to the Career Center to sign up for a make-up session.

College Ambassador Schedule

2018-2019 COLLEGE AMBASSADOR SCHEDULE

INSTUTUTION	REPRESENTATIVE	DATE AND TIME(S)	LOCATION
Clovis Community / Fresno City College	Ashlee Hickey	Thursdays 8:30am - 2:30 pm	Counseling & Career Center
Fresno State	Steven Kirkpatrick	Tuesdays & every other Thursdays 8:00 – 2:45 pm	Counseling & Career Center
Fresno Pacific University	Andrew Penner	October 4 (10:00am – 2:00 pm) November 1 (10:00am – 2:00 pm) December 6 (10:00am – 2:00 pm)	Counseling & Career Center

RESEARCH!

Make sure to visit each College/University website to research what is required for admission to that school as well as opportunities for money.

- GPA
- Testing (SAT/SAT Subject Test/ACT) scores
- Scholarships

NCAA/NAIA Eligibility

- ▶ Graduate from High School
- ▶ Pass 16 Core Classes
- ▶ Meet Core GPA/Test Score index (min 2.3 GPA with 900 SAT or 75 ACT sum)
- ▶ Seniors should register now online, if not done already
- ▶ Pick up 2 copies of the transcript release from Mr. Hodges

NCAA Eligibility Certification

www.eligibilitycenter.org

NAIA Eligibility Certification

www.playNAIA.org



Armed Services



Military recruiters on campus during school year for Air Force, Army, Marines, Navy, and more. Sign up in **the Career Center (Counseling Center)** to meet with recruiters.

ASVAB: December 5, 2018 (free)

- For Juniors or Seniors
- Military Entrance test
- Interest, Aptitude, Career Exploration
- Sign up in the Career Center

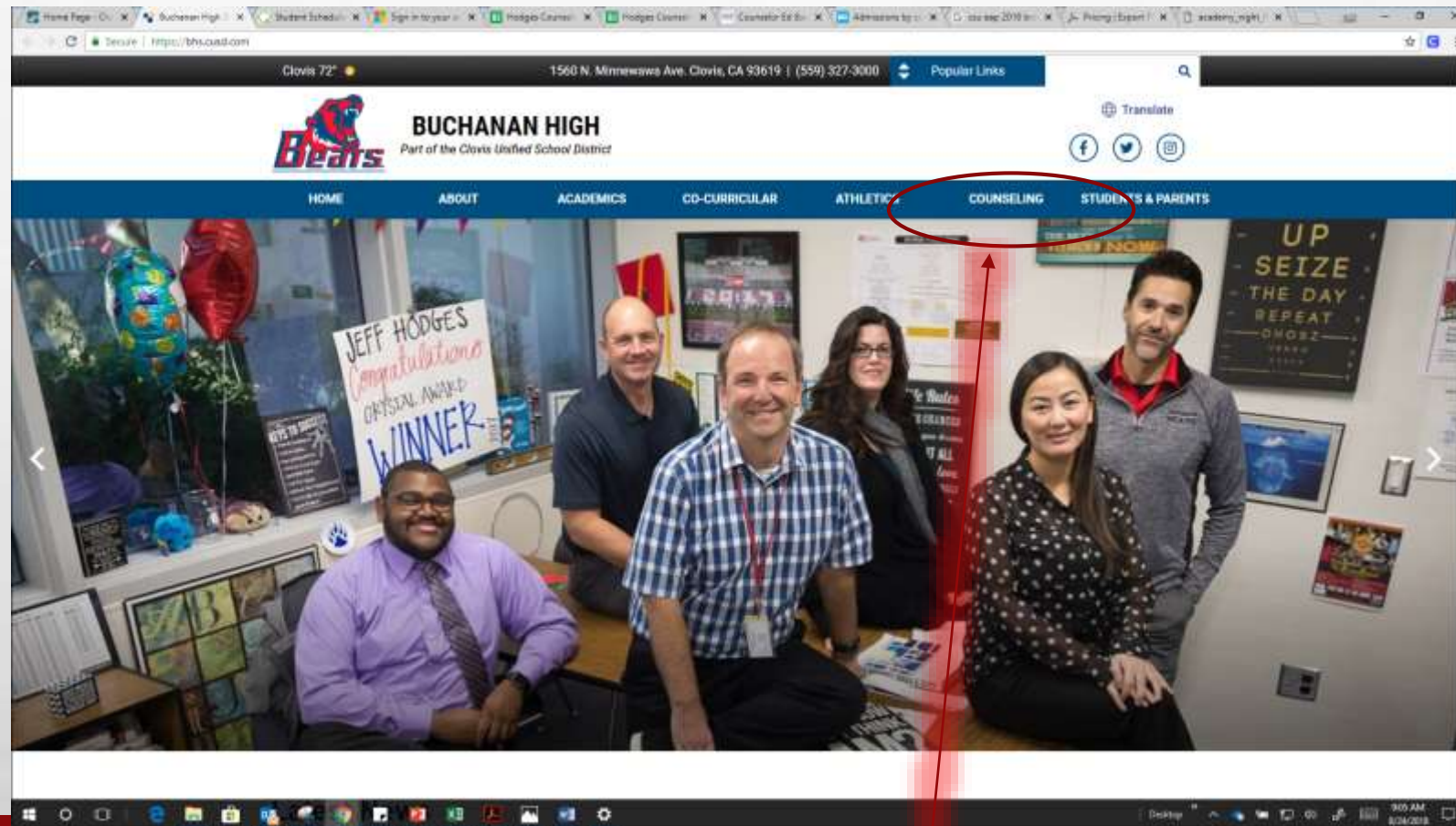
Academy Night – U.S. Service Academy

- Tuesday, October 16, 2018
- 6:00 p.m. to 7:00 p.m.
- CUSD Professional Development Building (1680 David E. Cook Way)



Counseling Center Website

www.bhs.cusd.com



From the Buchanan main page click on Counseling Center

**BUCHANAN HIGH**

Part of the Clovis Unified School District

Translate



HOME

ABOUT

ACADEMICS

CO-CURRICULAR

ATHLETICS

COUNSELING

STUDENTS & PARENTS

Counseling Staff

Graduation
RequirementsGrade Level
InformationAdvanced
Placement (AP)

Testing

Summer School

Summer Programs /
Enrichment

Transcripts

Transition Program

Career Center

College Planning

College & Career
VisitsScholarships &
Financial AidAlternatives to
College

Military

CSI

Emotional
WellnessCounseling
Resources

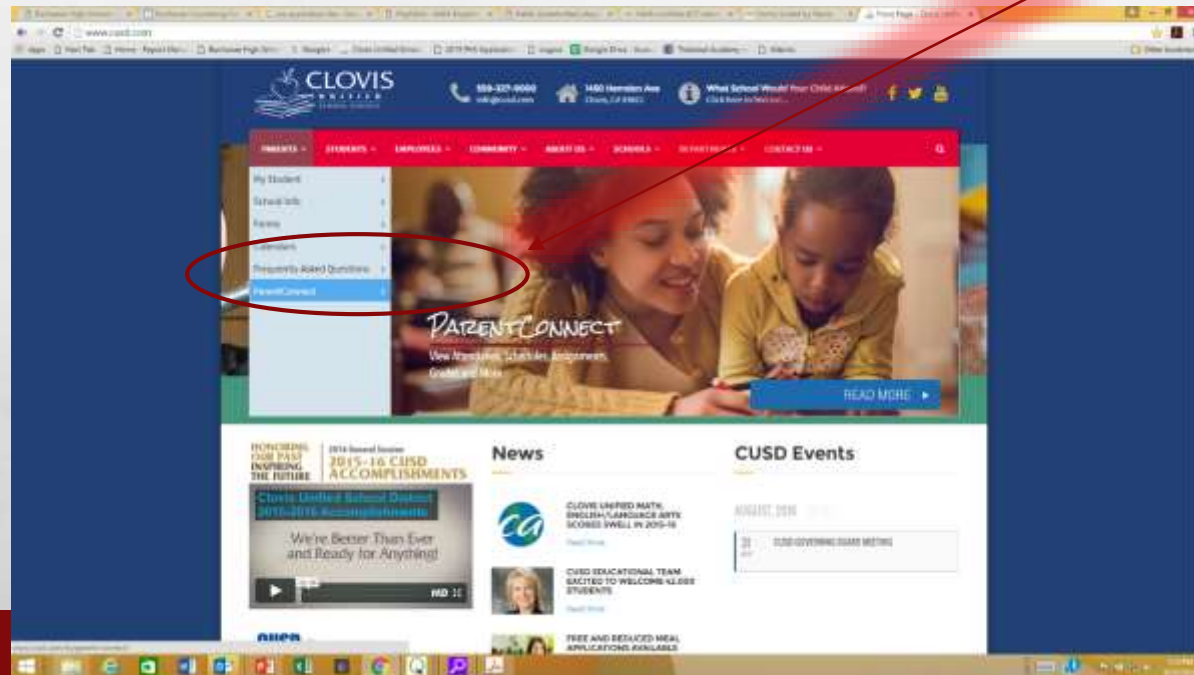
Latest News

Pull down window brings information to the touch

Parent Connect

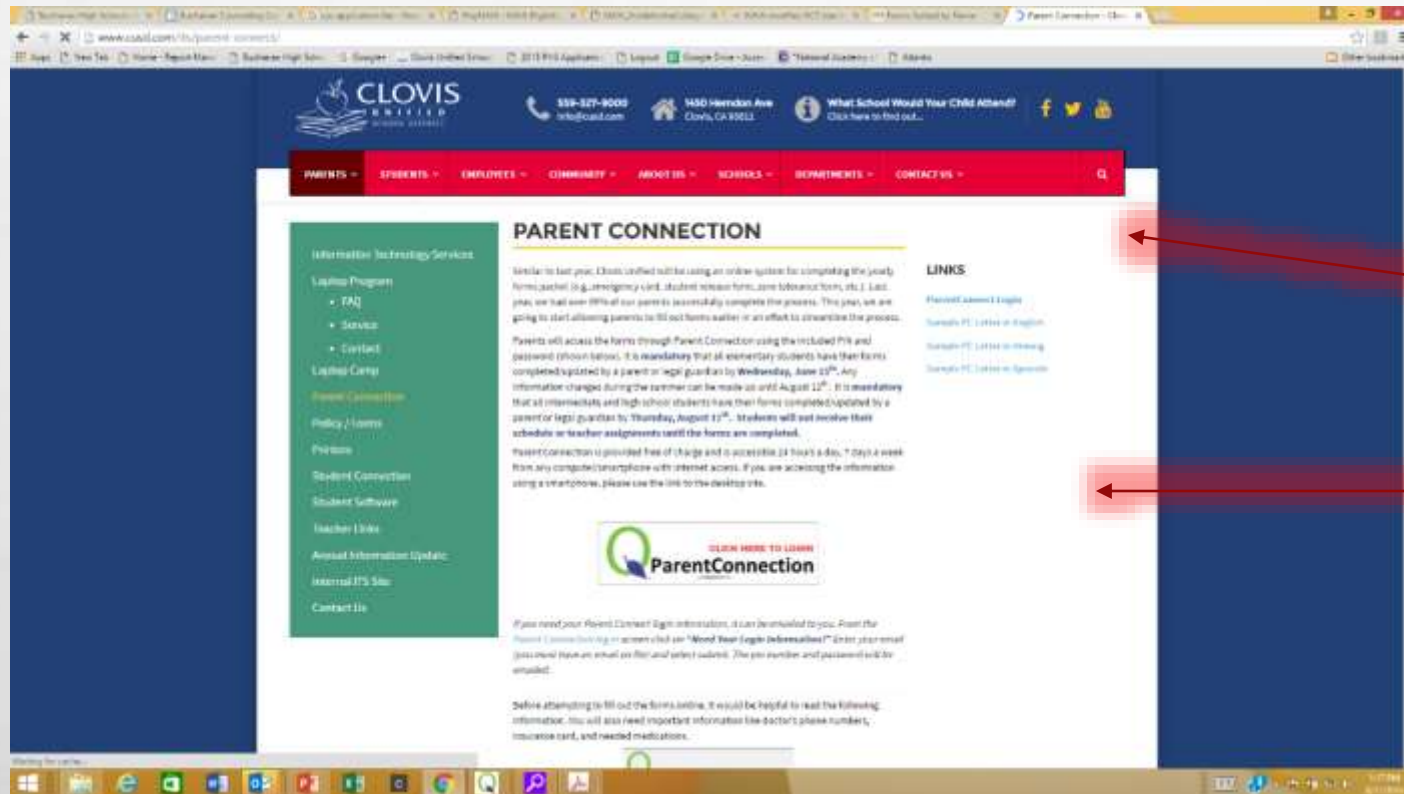
A great way to access information

From the CUSD website hover over PARENTS, then click on Parent Connect



Parent Connection

www.cusd.com



Click on Parent Connect Login

Instructions

Counseling Center Remind

(For students and parents)

For the Class of 2019

Text to: 81010

Message should read: @bhsc2019



More Senior Information

- **NHS:** Applications are due **October 8**
- **CSF Application window for Spring 2017:** **September 25-29** (no extension)
Documents available in English class or Office 100 starting on September 18.
- **Career Cruising** is still available to continue the investigation of possible careers and schools that have the degree you are looking for.

Did you know that the BHS Counseling Center sends out many mass e-mails each year to students and parents to notify you of important events and information? However, many of the e-mails go undeliverable due to inaccurate e-mails in the Q system, and thus this information never gets to you.

There are many senior parents with incorrect e-mails. If you have not received at least 3 e-mails from Jeff Hodges- your e-mail is not correct

Parents: Please go onto Parent Connect and update/verify your e-mail address.

Students: Please go onto Student Connect and add your e-mail address to your account.

Senior Activities

- Senior Remind Account

Text message to: 81010

Message says: @mslutj

Advisors: Mrs. Lutjens (Room 157), Mr. Martinez (Room 156)

- General BHS Information

Instagram: Buchanan_activities

Twitter: @Activities_BHS

Facebook: Buchanan High School

Snapchat: Buchanan High

Remind Account: @allbuch

- Cap & Gown Info

- Graduate Services will visit Gov/Econ classes on November 26 to distribute packets for graduation supplies.
- Cap, Gown, and Announcement ordering will take place during the first week in December (tentatively Dec 4-5)) in the Activities Office.

Specific dates and times TBA. Deadline for all cap/gown orders is usually the 2nd week in January

Senior Activities

- **Grad Bash: Info subject to change**
Universal Studios – May 30-31
Payment: Payment accepted in the activities Office, December 3- April 3.
Cost: \$170
Fliers will be handed out in Gov/Econ classes prior to accepting payments
- **Dates**
 - **Sadie Hawkins:** October 27, 2018
 - **Formal:** January 19, 2019
 - **Prom:** May 11, 2019
- **Baccalaureate:** Monday, June 3, 2019 at VIA Church
- **Graduation:** Tuesday, June 4th , 2019
- **Sober Grad:** Night of graduation (10pm-4am), John's Incredible Pizza, \$50, via Foudation

For those interested (tonight)

- Representatives from these local colleges are located in the Faculty/Staff Lounge:
 - **Clovis Community College**
 - **CSU Fresno** (Representing all CSU schools)
 - **Fresno Pacific University**
 - **Grand Canyon University**
- Counselors are available to answer questions.
- Please fill out an Evaluation form to help us get better!

Make it a great year!!

Thanks for coming!!

*Best of luck to you during the
2018-2019 school year!*

The BHS Counseling Staff

