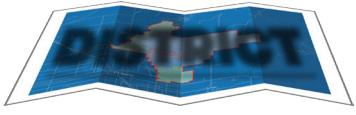


DISTRICT ATTENDANCE BOUNDARIES

UNDER REVIEW IN 2024



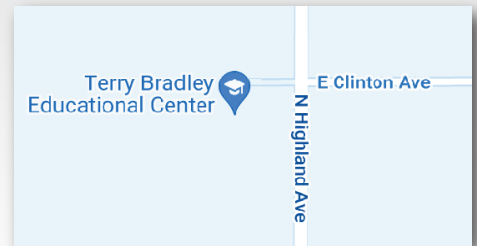
Clovis Unified’s school attendance boundaries are being reviewed in preparation for the opening of the district’s newest high school in **August of 2025**. Public meetings and opportunities for community input begin in late **January 2024** followed by a decision on new attendance maps in April. The new boundaries will then take effect with **the start of the 2025-26 school year**.

The public input process follows a months-long effort by an employee study group to analyze enrollment trends and study development plans for the cities of Fresno and Clovis to develop drafts of possible attendance maps that best meet the following guidelines:

- Maximize existing facility space
- Value neighborhood schools and keep neighborhoods together
- Reduce operational expenses
- Create boundaries that will last for 5-10 years whenever possible
- Balance enrollment across high school areas

While the driving force behind this attendance boundary review is the addition of the Terry P. Bradley Educational Center and Clovis South High School, the study looks at all schools in Clovis Unified to ensure:

- Schools are not overcrowded or under-enrolled
- Existing facilities are used efficiently and new schools are only built when needed



Initial Findings by the Steering Committee



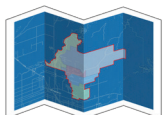
Schools in the Clovis East Area and some in the Clovis High Area are currently overcrowded, and growth is continuing in these areas.



Several schools in the Clovis North Area and Buchanan Area are growing rapidly and are (or soon will be) over capacity.



Schools in the Clovis West Area have seats available.



The District at a Glance: Clovis Unified’s close to 200-square-mile boundary extends south to Kings Canyon Boulevard and north to the edge of Millerton Lake and includes most of the city of Clovis, 20% of the city of Fresno and a small portion of unincorporated Fresno County.



cusd.com/TBECBoundaryChanges.aspx

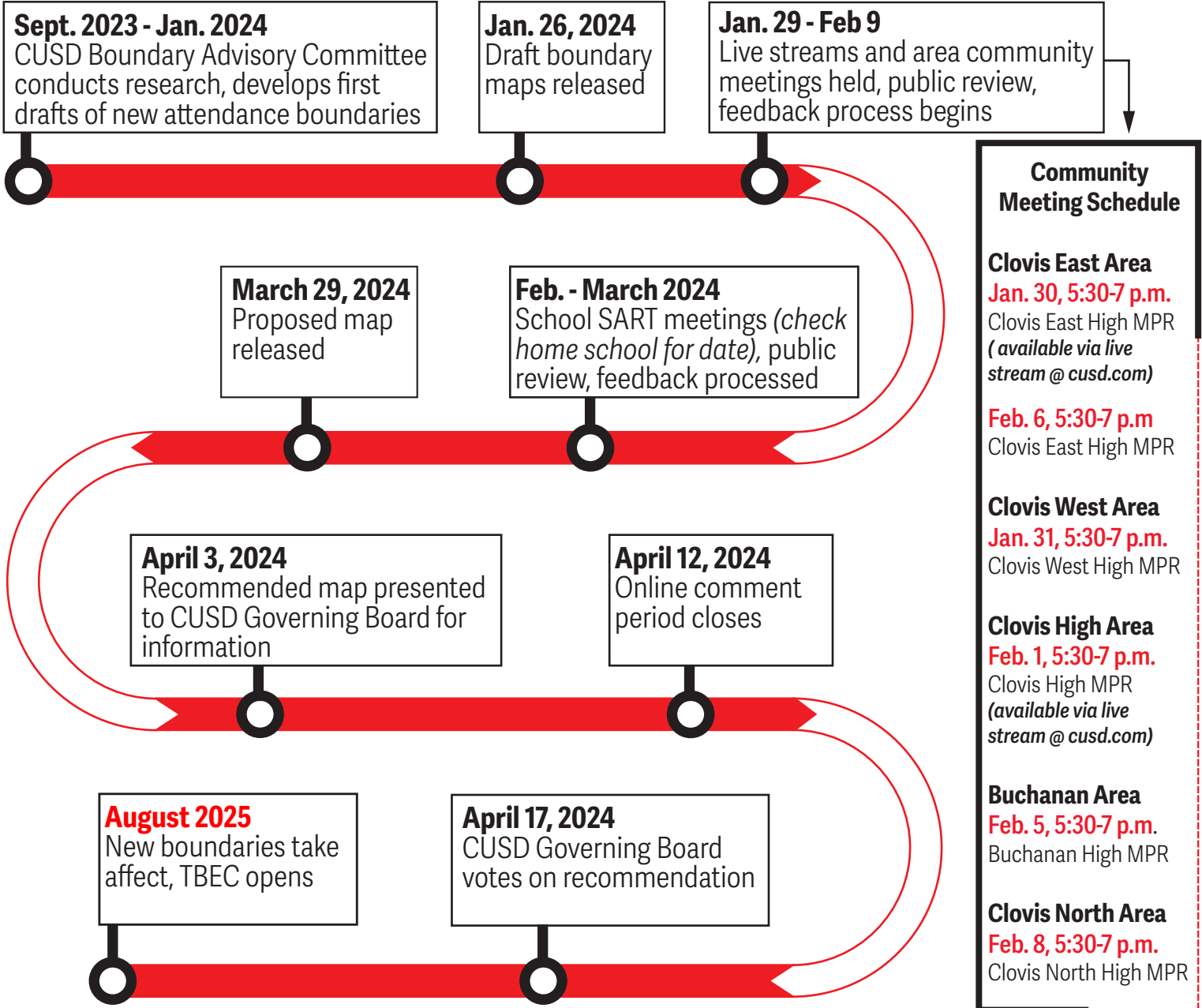


ATTENDANCE BOUNDARIES

UNDER REVIEW IN 2024

Timeline and Important Dates

On Jan. 26, 2024, drafts of possible new school attendance lines will be released and the community input process will begin. Live stream events, area community meetings and SART (parent) meetings at all schools will be held to review proposed maps, provide discussion and gather input. That feedback will be used to develop a final recommendation to the Governing Board for consideration and action in April.



Share Your Comments

A comment form for our community to share their thoughts on the attendance boundary options will be available starting in late January 2024 when initial drafts of possible school attendance boundaries are released and the community input